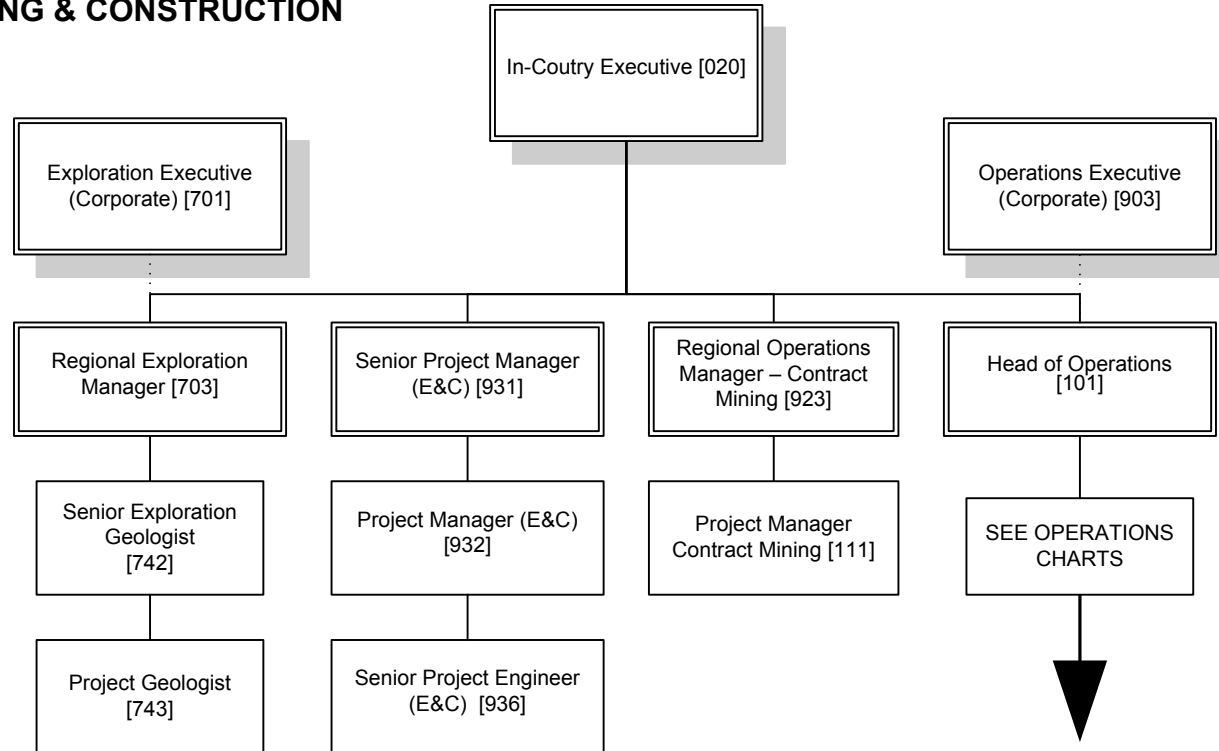
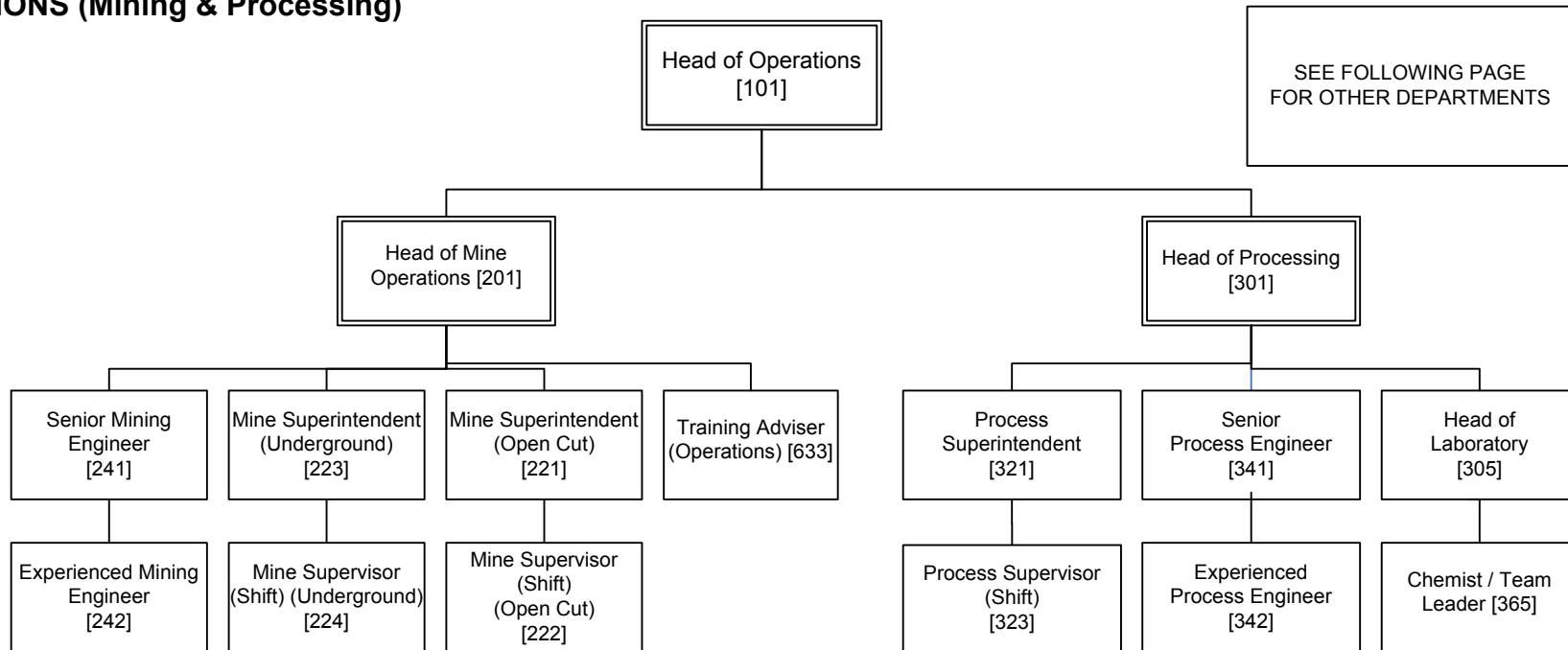


**SPECIMEN ORGANISATION CHART  
(Expatriate Operations) -  
CORPORATE, EXPLORATION &  
ENGINEERING & CONSTRUCTION**

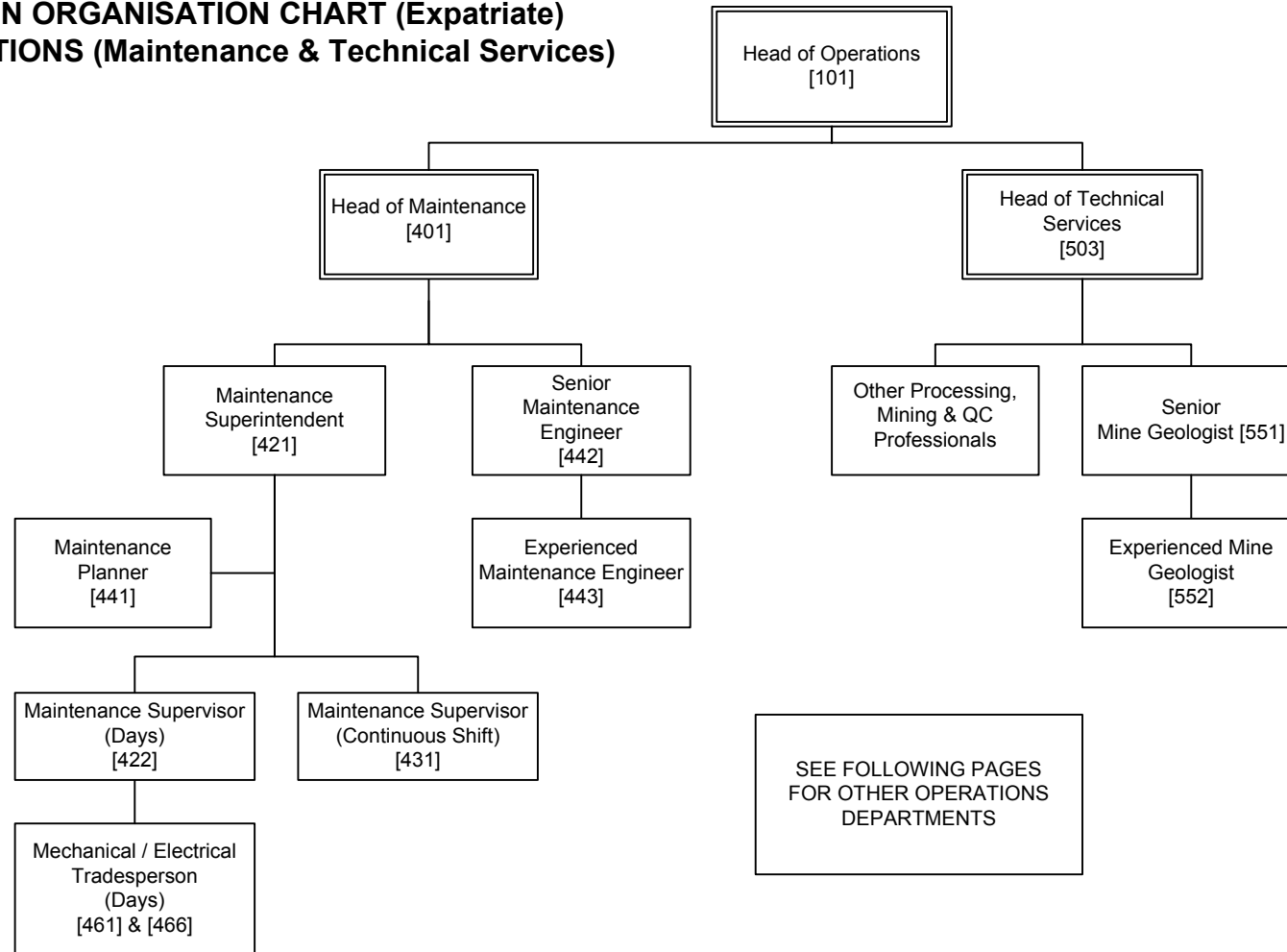


**SPECIMEN ORGANISATION CHART (Expatriate)  
- OPERATIONS (Mining & Processing)**



SEE FOLLOWING PAGE  
FOR OTHER DEPARTMENTS

**SPECIMEN ORGANISATION CHART (Expatriate)  
- OPERATIONS (Maintenance & Technical Services)**



**SPECIMEN ORGANISATION CHART (Expatriate)  
- MINING OPERATIONS (Support Services)**

